

Chavenage - A very special place for you to share and celebrate in style



Chavenage

HISTORIC HOUSES

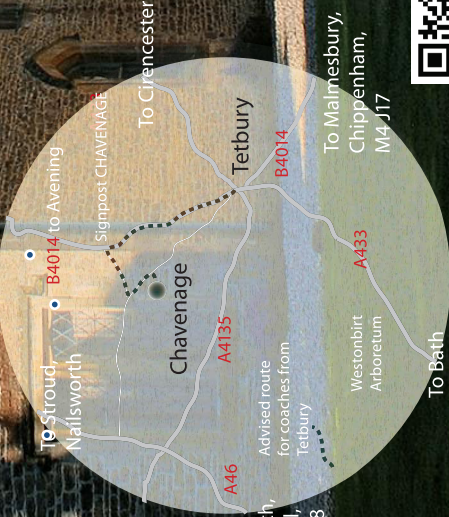
Chavenage House, Garden and Grounds are available for hire. No two functions are the same. We can guide you to plan your event to suit your own individual requirements.

Chavenage can be used for:

- Film and TV productions*
- Photo-Shoots*
- Christenings in Private Chapel*
Weddings
- Anniversary, Birthday and Family Parties*
Lunches and Dinners
- Product Launches* *Corporate Events* *Team Building*
Conferences *Seminars*
Cycle/Car Rallies



Chavenage



Designed by Zigurat. info@ziguratdesign.co.uk

Chavenage is close to the Cotswold towns of:
Tetbury 2 miles, Stroud 7 miles, Cirencester 10 miles

For further information contact: Caroline Lowsley-Williams
The Office, Chavenage, Teli: 01 666 502329/504696
Tetbury, Glos. GL8 8XP email: info@chavenage.com

www.chavenage.com

*An Elizabethan Jewel,
set in The Cotswolds*



Chavenage is a wonderful Elizabethan house of mellow grey Cotswold stone and tiles which contains much of interest to the discerning visitor. Only two families have owned the house since the Dissolution of the Monasteries, firstly the Stephens family and since 1891 the Lowsley-

Williams'. The approach aspect is virtually as left by Edward Stephens in 1576. His grandson, Col. Nathaniel Stephens, MP for Gloucestershire during the Civil War, was cursed for supporting Cromwell, giving rise to legends and mysterious happenings at Chavenage ever since.



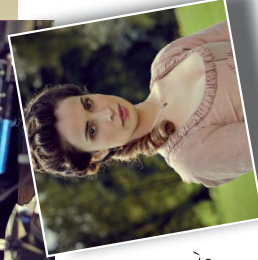
There are many interesting rooms housing tapestries, fine furniture, pictures and relics of the Cromwellian period. Of particular note are the Great Hall, where a contemporary screen forms a minstrels' gallery, and the two tapestry rooms, where it is said Cromwell slept.



Chavenage



Chavenage has often been used for a location for TV and film productions. Credits include: **Barry Lyndon**, the **Hercule Poirot** story **The Mysterious Affair at Styles**, **The House of Elliot**, **Casualty**, **Cider with Rosie**, **Dracula**, **Lark Rise to Candleford**, **Bonekickers** and **Tess of the D'Urbervilles** starring Gemma Arterton and Oscar winning Eddie Redmayne. Channel 4's historical drama **New Worlds** starring Jamie Dornan, and scenes from the BBC's **Wolf Hall**, were filmed at Chavenage which also features as **Trenwith House** in **Poldark**.



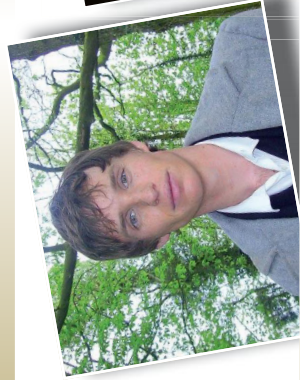
Above: Aidan Turner as Ross Poldark

Right: Heida Reed as Elizabeth

photos courtesy of Warrmoth Screen Ltd.

Below: Eddie Redmayne

Below right: Jamie Dornan in 'New Worlds'



Chavenage is the ideal attraction for those wishing an intimate, personal tour, usually conducted by a member of the family, or for groups wanting a change from larger establishments. It also provides a charming venue for wedding receptions, small conferences and other functions.

